



# GILLMANN

fil à coudre haut de Gamme

OD: Outer Diameter ID: Inner Diameter H: Height

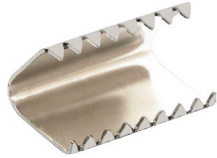
METAL TIPS / EMBOUTS MÉTALLIQUES

[www.gillmanngroup.com](http://www.gillmanngroup.com)



**G-4169**

OD / 20.05 mm - H / 9.04 mm  
Wt: 0.50 mm



**G-3169**

OD / 20 mm - H / 13.35 mm  
Wt: 0.50 mm



**G-1169**

OD / 16 mm - H / 3.10 mm  
Wt: 0.40 mm



**G-0169**

OD / 23.17 mm - H / 11.72 mm  
Wt: 0.40 mm



**G-9069**

OD / 16.04 mm - H / 4.88 mm  
Wt: 0.30 mm



**G-8069**

OD / 20.11 mm - H / 5.45 mm  
Wt: 0.30 mm



**G-7069**

OD / 25.22 mm - H / 12.61 mm  
Wt: 0.30 mm



**G-6069**

OD / 40 mm - H / 7.42 mm  
Wt: 0.30 mm



**G-5069**

OD / 20.10 mm - H / 5.95 mm  
Wt: 0.30 mm



**G-4069**

OD / 16.04 mm - H / 5.50 mm  
Wt: 0.30 mm



**G-3069**

OD / 16.04 mm - H / 3.60 mm  
Wt: 0.30 mm



**G-2069**

OD / 23.10 mm - H / 12.60 mm  
Wt: 0.40 mm



# GILLMANN

fil à coudre haut de Gamme

OD: Outer Diameter ID: Inner Diameter H: Height

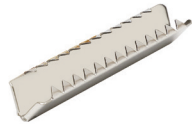
METAL TIPS / EMBOUTS MÉTALLIQUES

[www.gillmanngroup.com](http://www.gillmanngroup.com)



**G-0469**

OD / 20.14 mm - H / 6.34 mm  
Wt: 0.30 mm



**G-9369**

OD / 50.43 mm - H / 7.40 mm  
Wt: 0.40 mm



**G-8369**

OD / 40.23 mm - H / 8.67 mm  
Wt: 0.40 mm



**G-7369**

OD / 31.77 mm - H / 8.73 mm  
Wt: 0.40 mm



**G-6369**

OD / 26 mm - H / 8.84 mm  
Wt: 0.40 mm



**G-5269**

OD / 12.80 mm - H / 3.74 mm  
Wt: 0.40 mm



**G-4269**

OD / 16.35 mm - H / 5.6 mm  
Wt: 0.50 mm



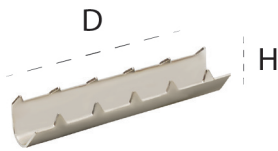
**G-3269**

OD / 10.15 mm - H / 7.36 mm  
Wt: 0.50 mm



**G-2269**

OD / 13.10 mm - H / 11 mm  
Wt: 0.40 mm



**G-1269**

OD / 30.56 mm - H / 4.60 mm  
Wt: 0.40 mm



**G-0269**

OD / 20.11 mm - H / 11.50 mm  
Wt: 0.40 mm



**G-7169**

OD / 20.34 mm - H / 7.21 mm  
Wt: 0.30 mm



**G-6169**

OD / 15.16 mm - H / 6.24 mm  
Wt: 0.40 mm